

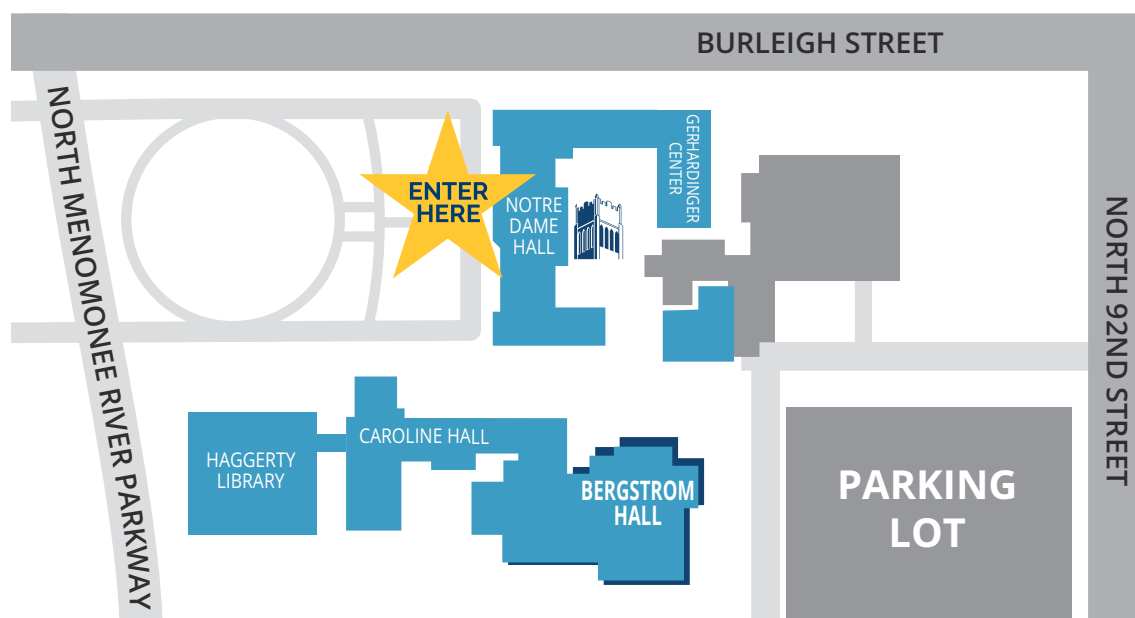
PREPARING FOR YOUR CAMPUS VISIT

This summer, Mount Mary has implemented safety guidelines to promote social distancing and ensure the safety of our guests. Below are the ways we are keeping our campus safe and clean for visitors like you.

Expectations for Visitors

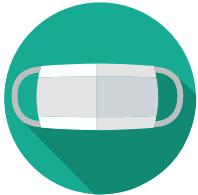
- **If you feel ill or may have been exposed to COVID-19**, we request that you schedule a virtual visit instead of coming to campus. You can do so at mtmary.edu/visit.
- **Mount Mary is requiring that all visitors take a short self health screening prior to coming to campus.** Please [click here](#) to fill out the self screening prior to the your campus visit. If you are bringing family members or guests to campus, each of your guests must complete this screening as well.
- **You will be required to wear a mask during your visit to Mount Mary.** We are happy to provide you with a mask if you do not have your own. Children under two years of age do not need to wear masks. If you are unable to wear a mask due to a medical or physical condition, we ask that you schedule a virtual visit at mtmary.edu/visit instead of coming to campus.
- **When you come for your visit, please enter Notre Dame Hall to check-in at the Admissions Welcome Center**, where you will be greeted by an Admissions team member. See below for instructions on where to park and a campus map.
- While you may stand and sit near your family members, **please maintain six feet of distance from others** not in your family/group while on campus.
- **Please do not hug, shake hands with, or touch others** on campus.

CAMPUS AND PARKING MAP



What we're doing to Keep You Safe

- Our staff and students have been asked **not to report to work** if they are feeling ill or have come in contact with someone who is or might be ill.



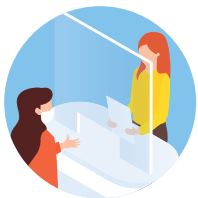
- Our staff and student ambassadors are **wearing masks** during all of their interactions with visitors.

- Door handles, desk areas, countertops, keyboards, phones, restrooms, and conference rooms are **disinfected between each campus visit**.



- Student ambassadors are **washing their hands** after every campus tour.

- **Hand sanitizer** is readily available for our visitors and staff.



- **Plexiglass shields** are in place in our Welcome Center and Financial Aid Office to help create an additional barrier between staff and visitors.

- Our **Welcome Center doors remain open** during the day to avoid repeated touching of the door handles.

- The **windows in the Welcome Center are open** during the day (weather permitting) to facilitate the flow of fresh air.



- **No more than six visitors or two families/units*** are allowed in the Welcome Center at one time. Other visitors will be greeted by staff and expected to wait in the lobby area outside of the Welcome Center.

- All campus events are **limited to 10 people**, including visitors and Mount Mary staff. Larger spaces on campus are being utilized as needed to maintain social distancing.



- During campus tours, our student ambassadors **open doors for visitors** to ensure visitors are not touching surfaces unnecessarily.

- In an effort to reduce the risk of exposing our residents to unnecessary germs, visitors will **not be able to tour our residence hall** at this time.

** A unit includes one student and any of his/her guests.*

VIRTUAL VISITS

We continue to offer individual virtual visits and webinars in addition to on-campus visits.

Go to mtmary.edu/visit to schedule your virtual visit today.